



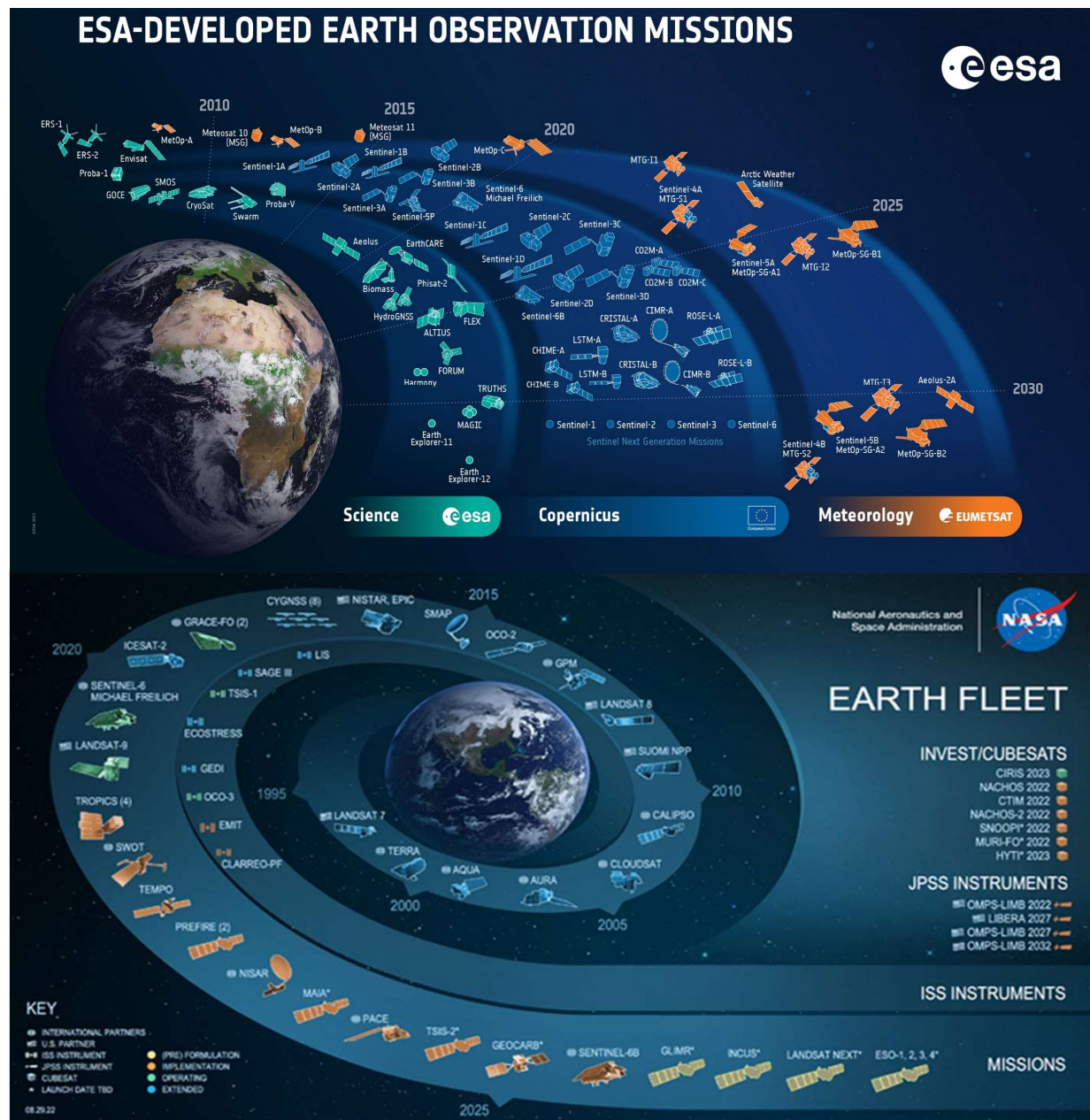
UNIVERSITETET  
I OSLO

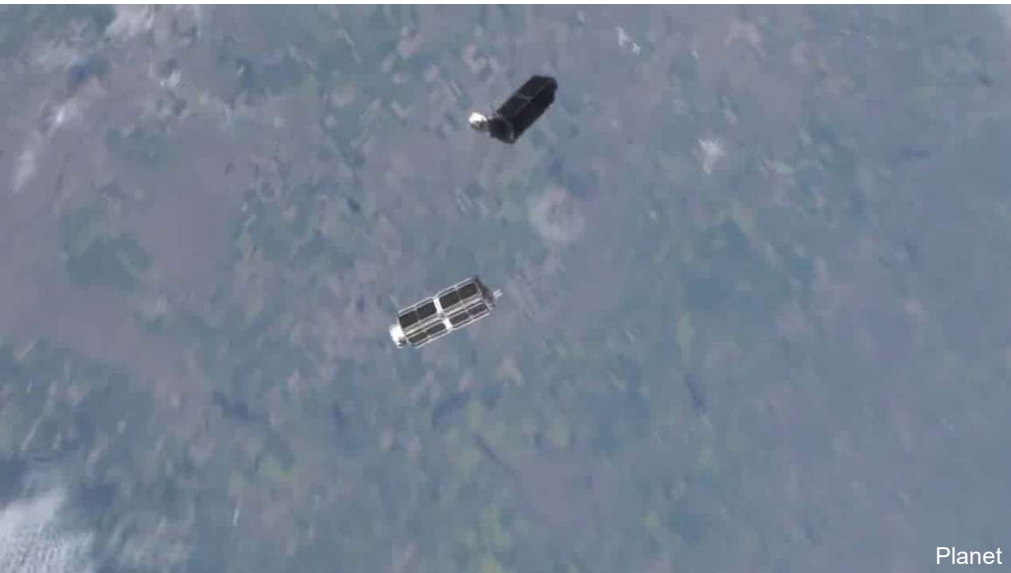
I hardt vær

# Hva forteller satellittene oss om konsekvensene av klimaendringene?

Andreas Kääb  
Professor  
Institutt for Geofag

I hardt vær – 7 mai 2024

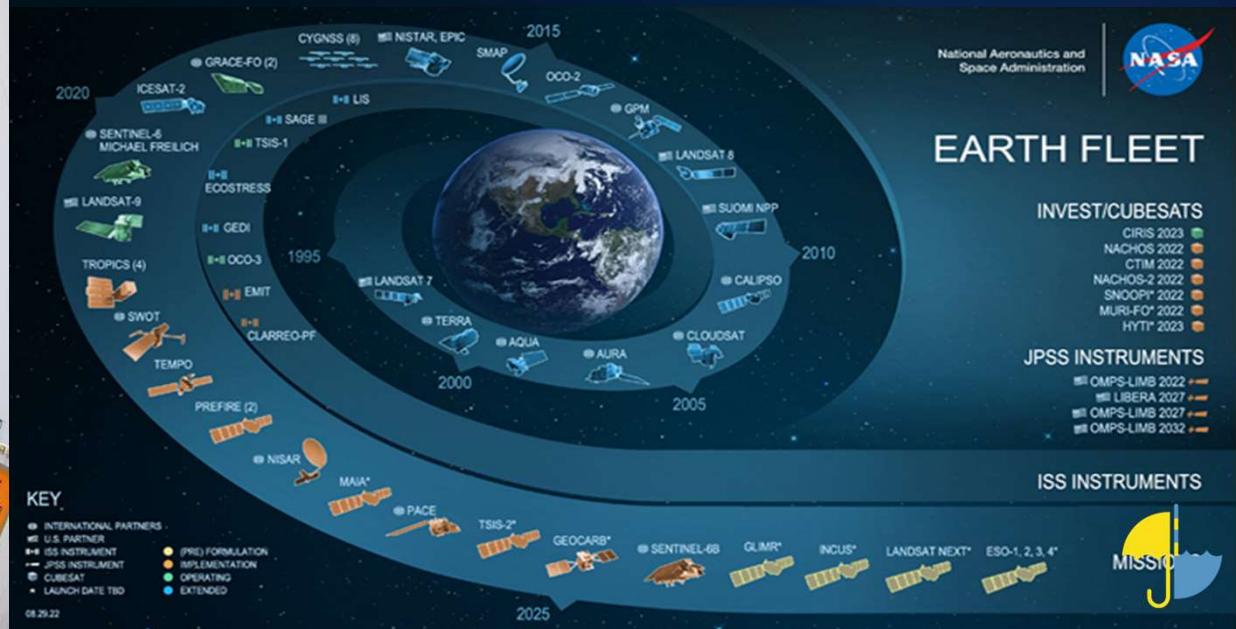
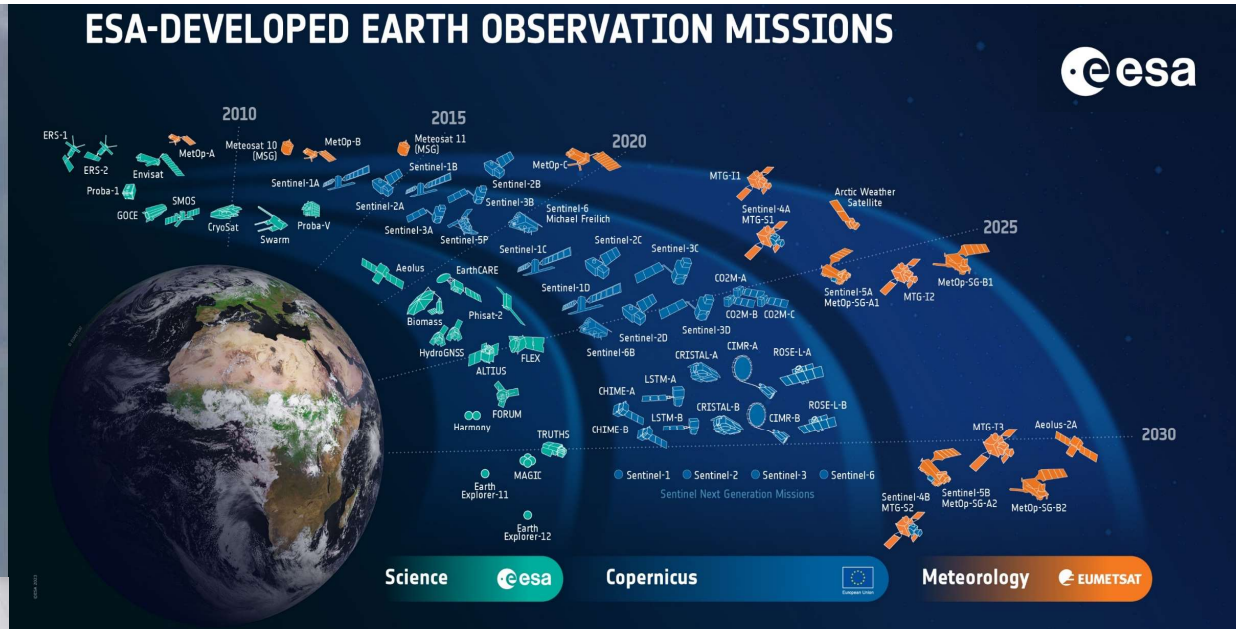


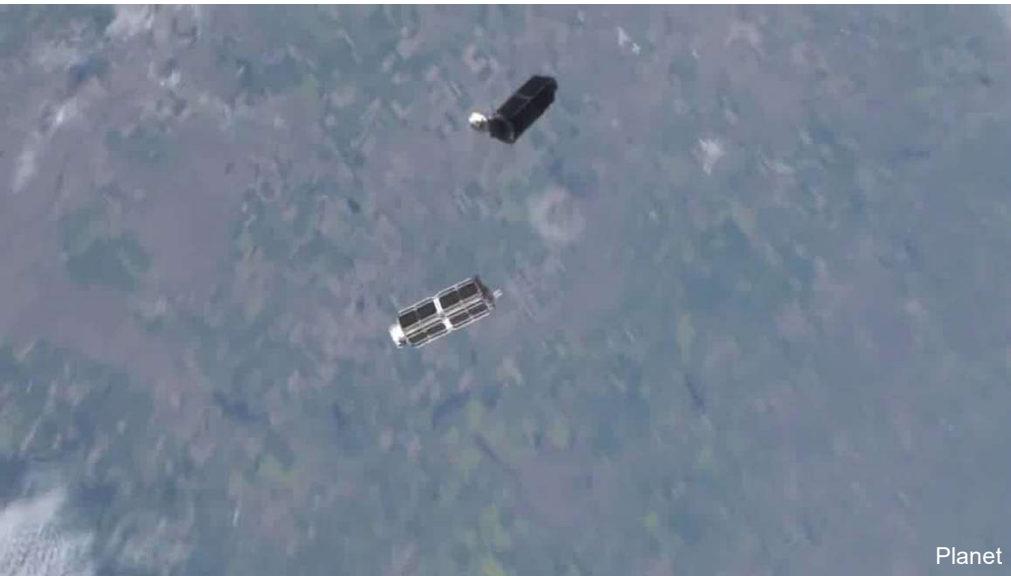


Planet



ESA

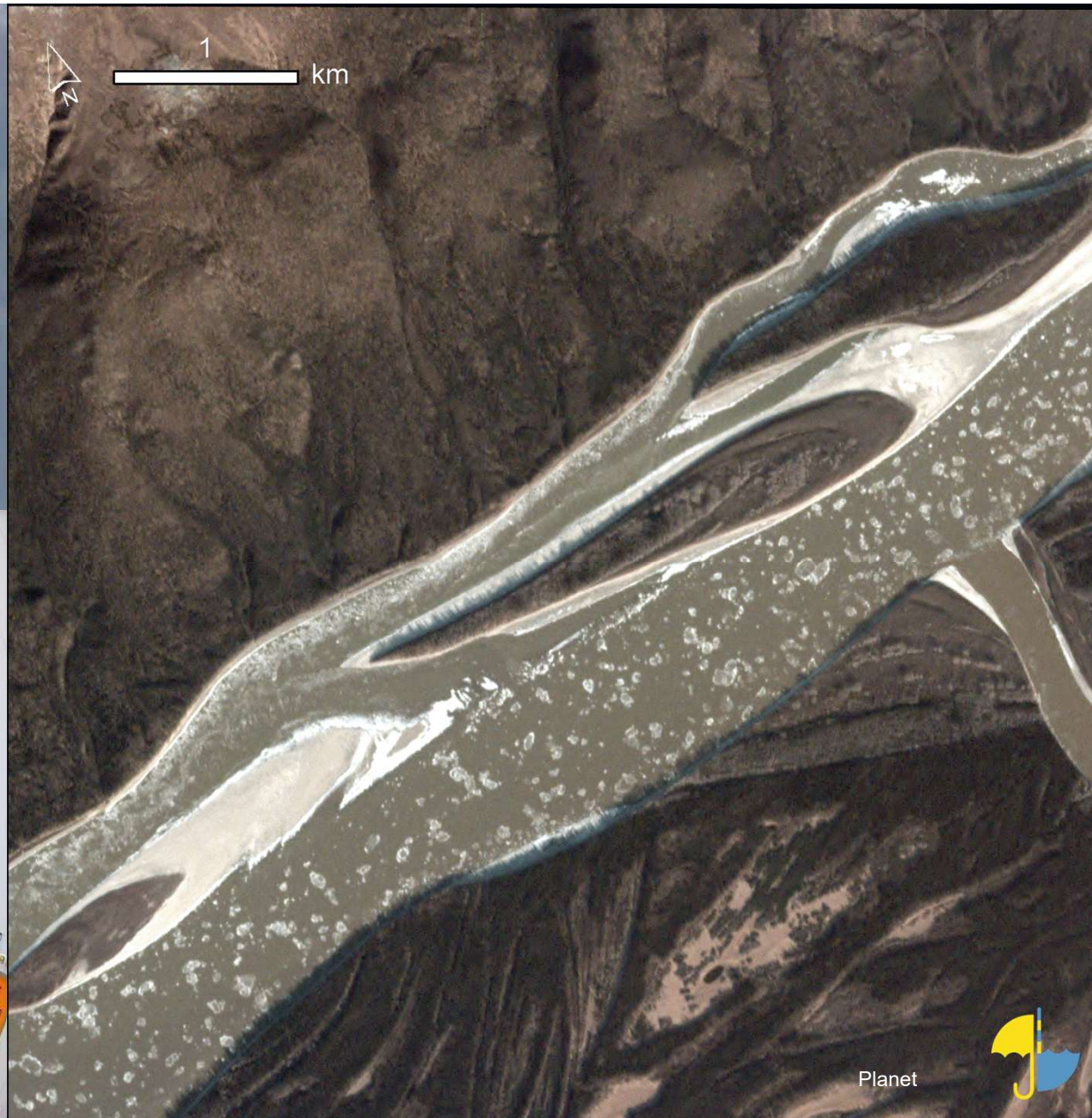




Planet

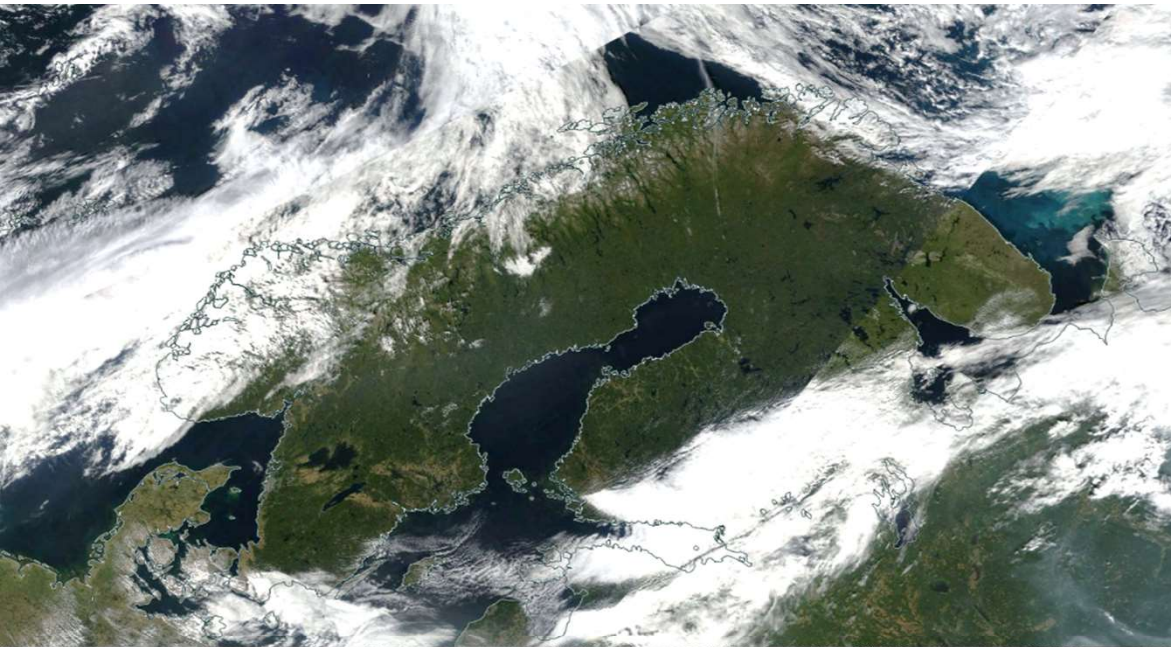


ESA

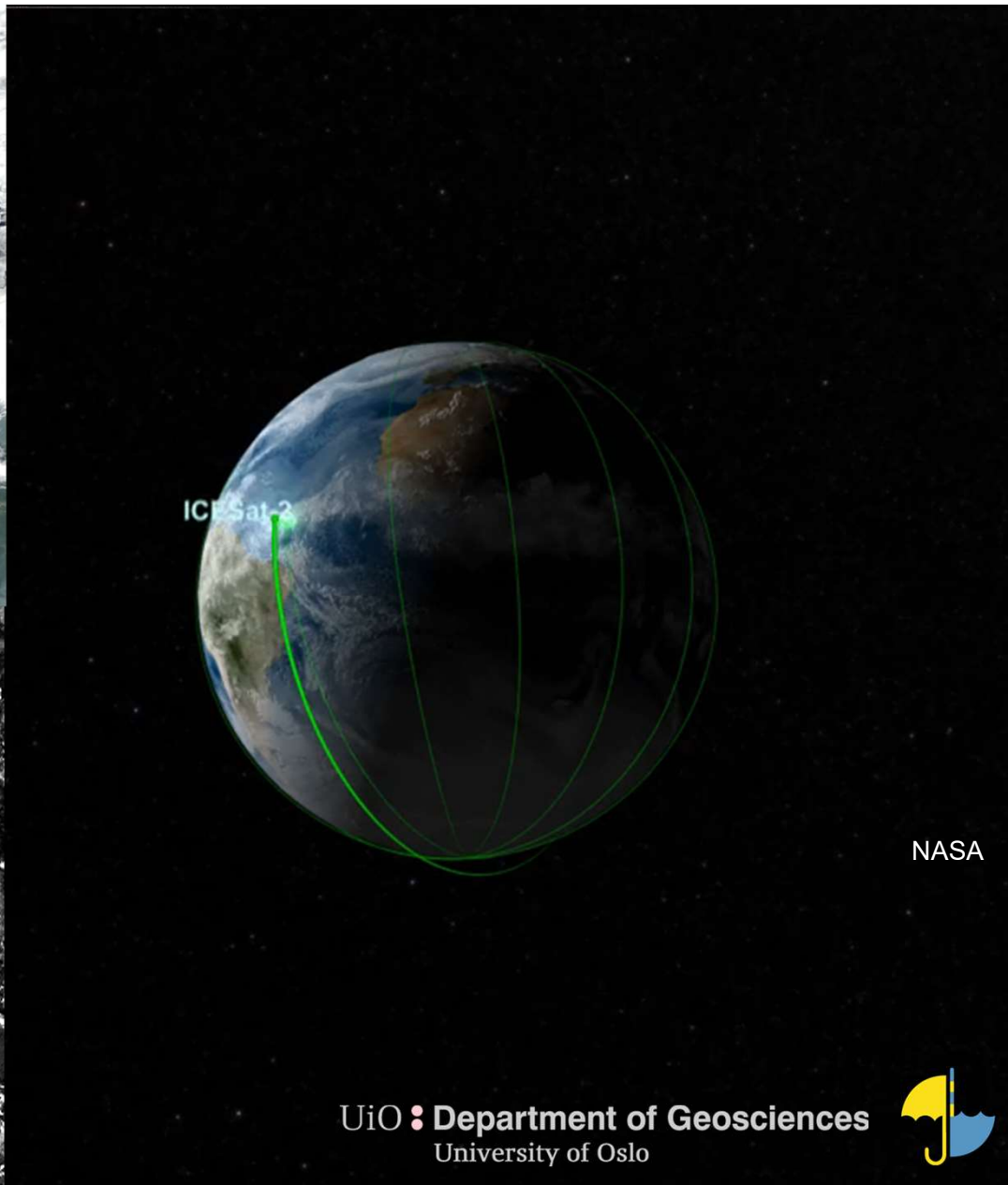


Planet





DLR / Airbus



NASA

UiO • Department of Geosciences  
University of Oslo



*Tenk globalt*

*Handle lokalt*



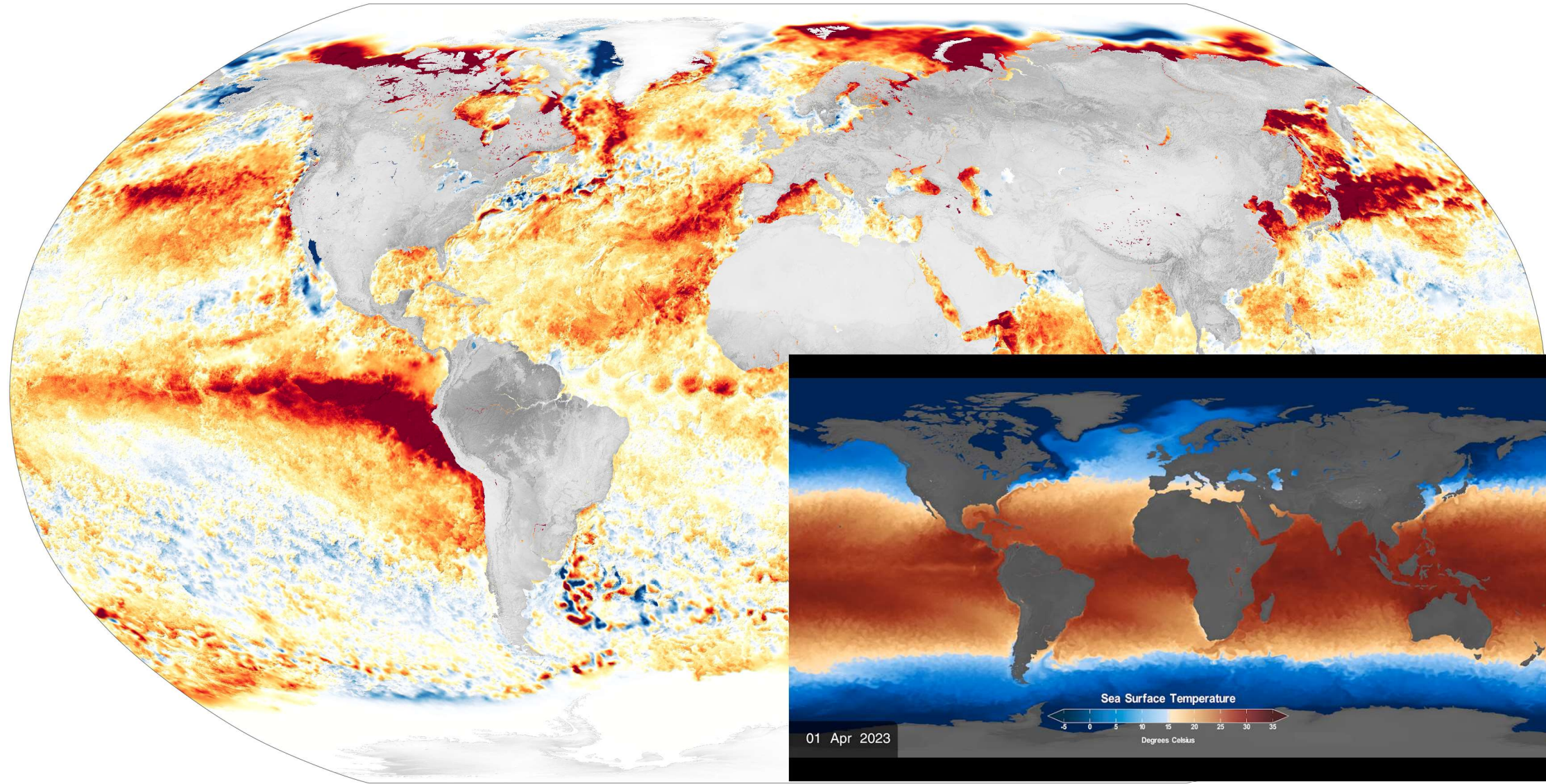
Satellitter forteller oss om:

- Globale forandringer
- Lokale konsekvenser

*Tenk globalt*

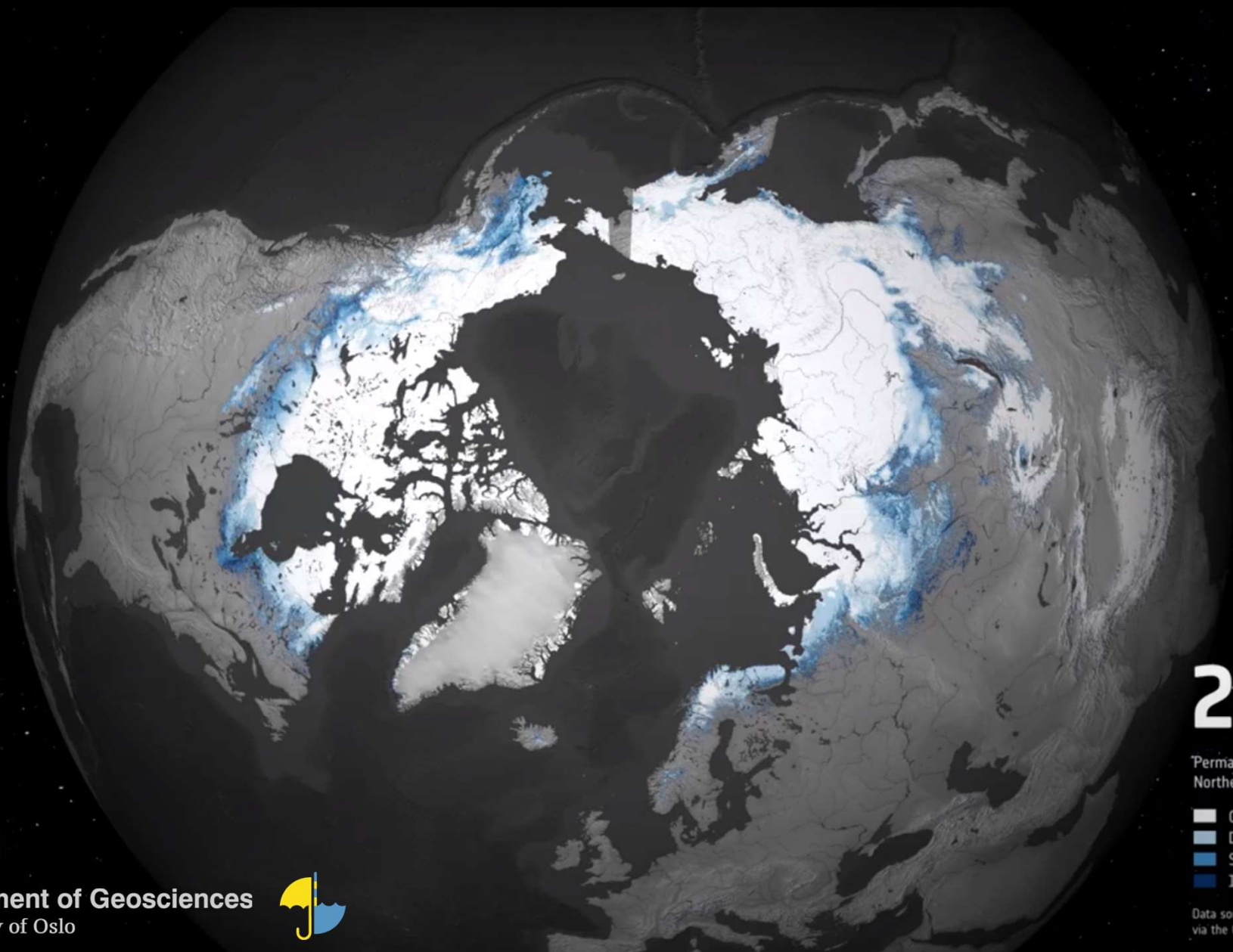
*Handle lokalt*





Sea surface temperature anomaly August 21 2023 vs. 2003-2014 average (NASA)





2003

Permafrost extent for the Northern Hemisphere

- Continuous
- Discontinuous
- Sporadic
- Isolated

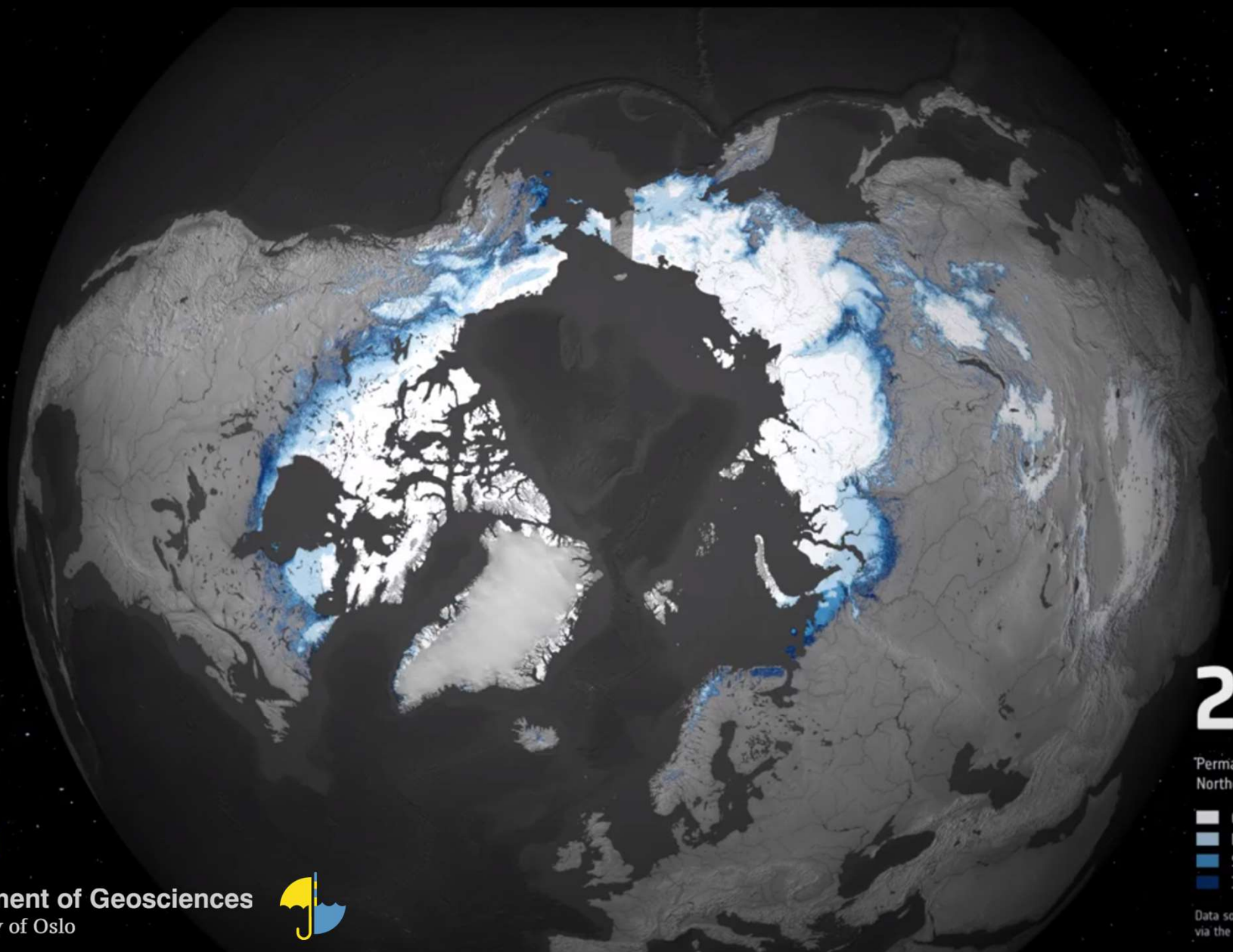
Data source: Permafrost CCI, Obu et al., 2019 via the CEDA archive



UiO • Department of Geosciences  
University of Oslo







# 2016

Permafrost extent for the Northern Hemisphere

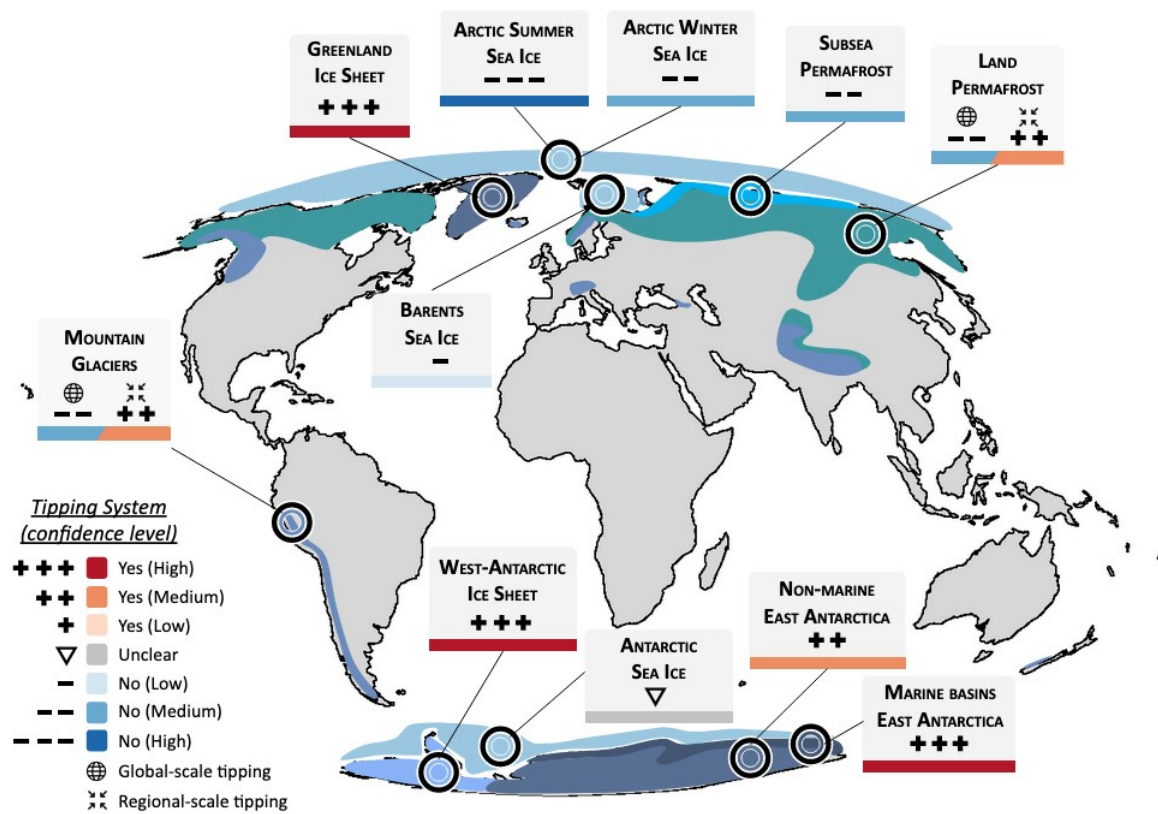
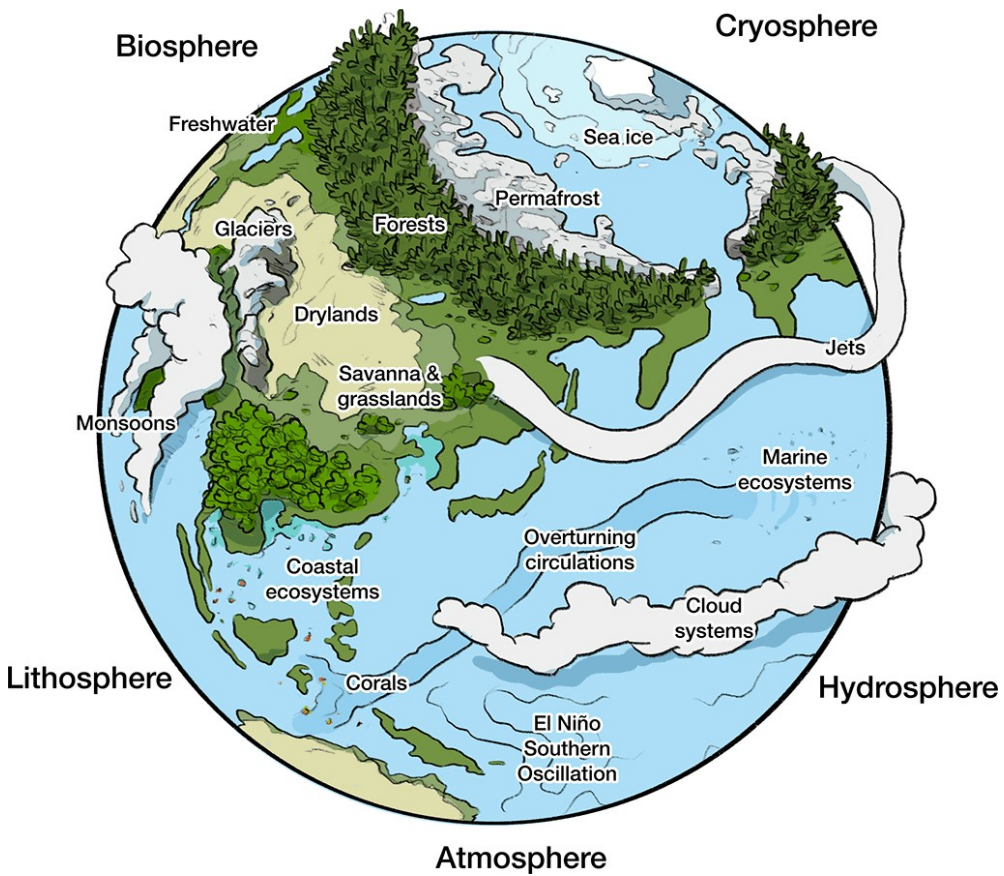
- Continuous
- Discontinuous
- Sporadic
- Isolated

Data source: Permafrost CCI, Obu et al., 2019 via the CEDA archive



UiO • Department of Geosciences  
University of Oslo





Global Earth System tipping points (Global Tipping Point Report, 2023)



Satellitter forteller oss om:

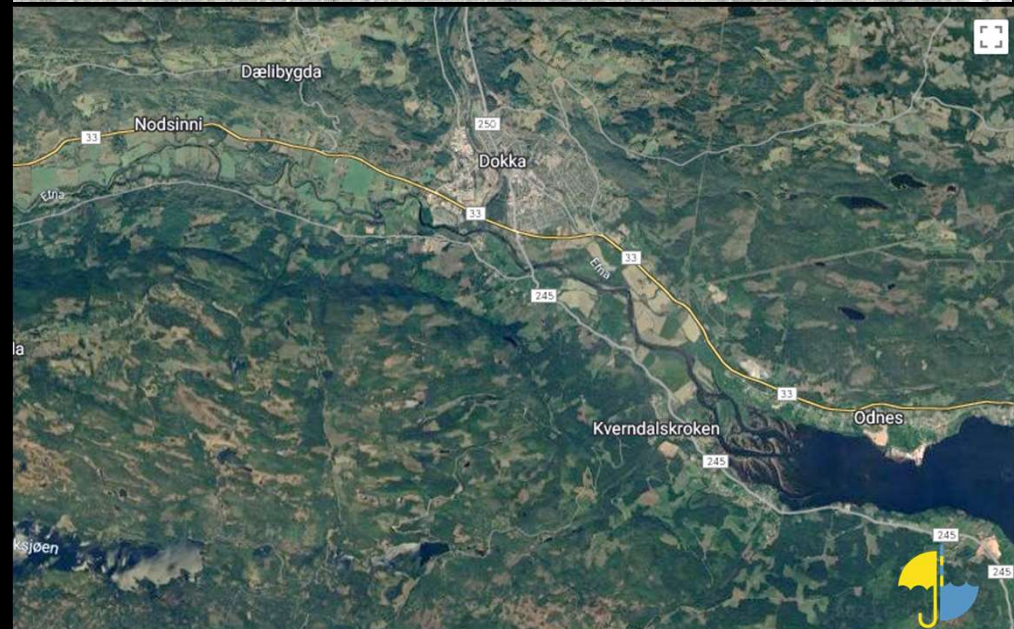
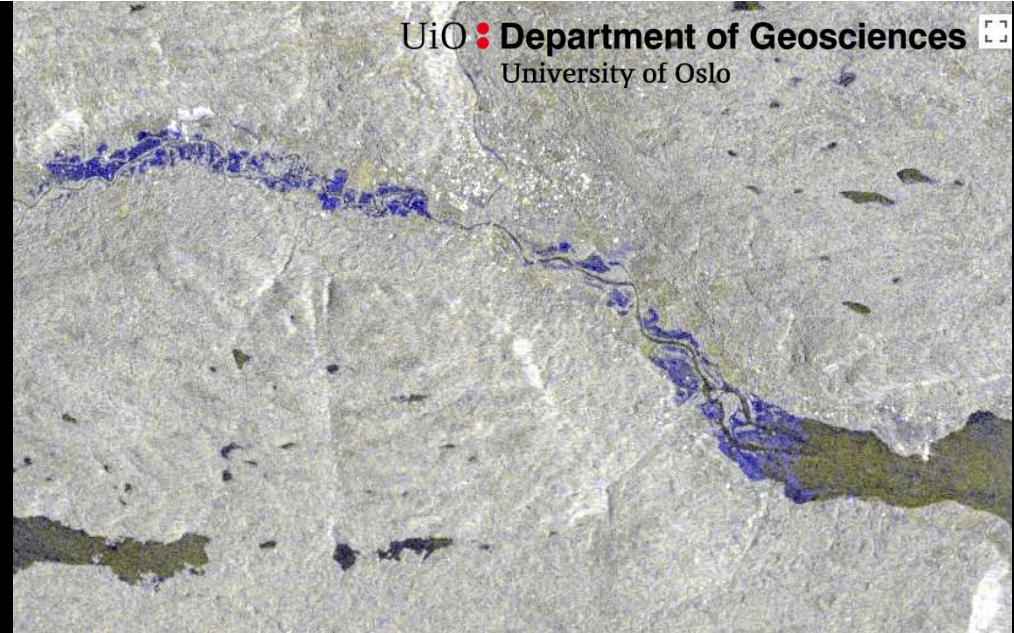
- Globale forandringer
- Lokale konsekvenser

*Tenk globalt*

*Handle lokalt*



# For mye vann



# For lite vann



# Rask bevegelse



Chamoli (Uttarakhand, India), 7 Feb 2021



UiO : Department of Geosciences  
University of Oslo

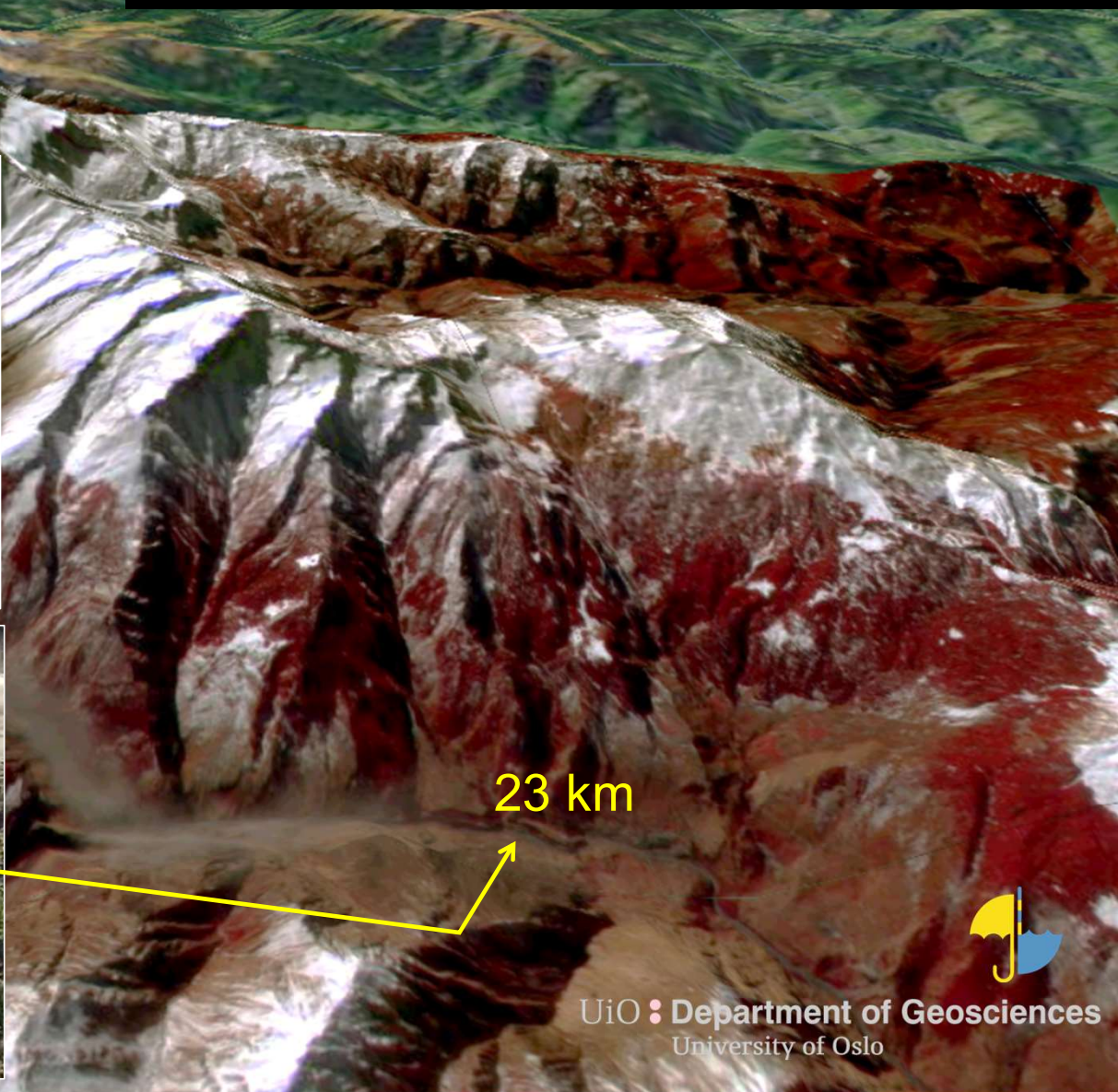
Chamoli (Uttarakhand, India), 7 Feb 2021



UiO : Department of Geosciences  
University of Oslo



# Chamoli (Uttarakhand, India), 7 Feb 2021

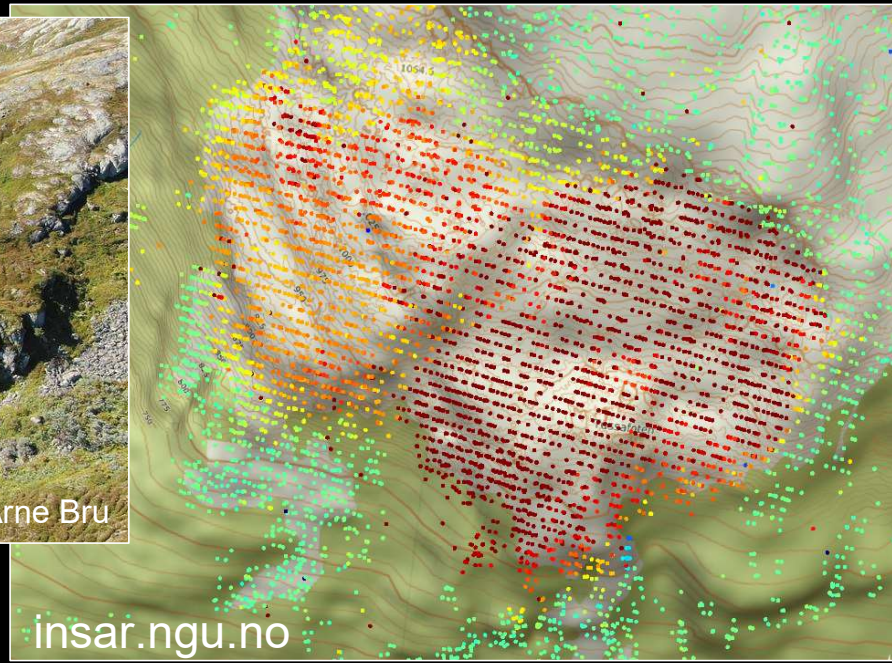


23 km

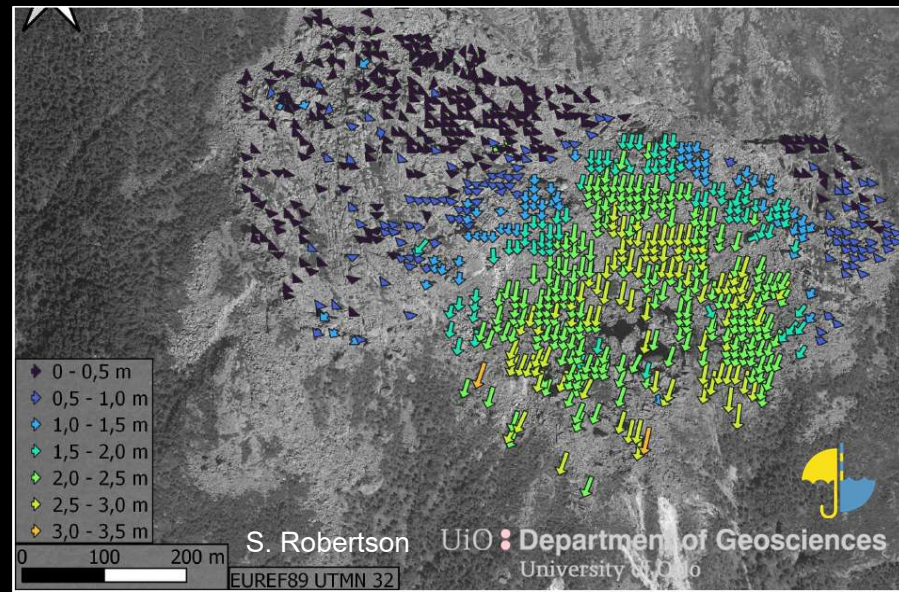


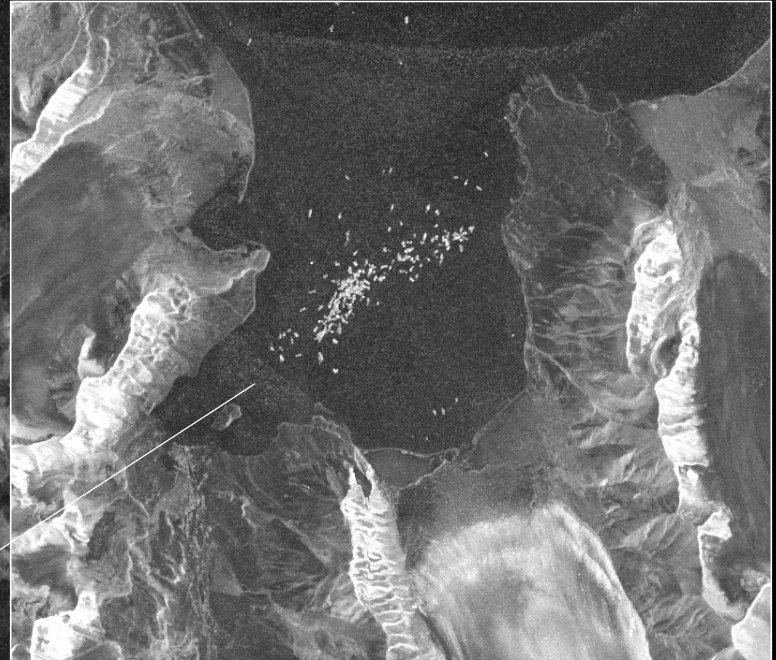
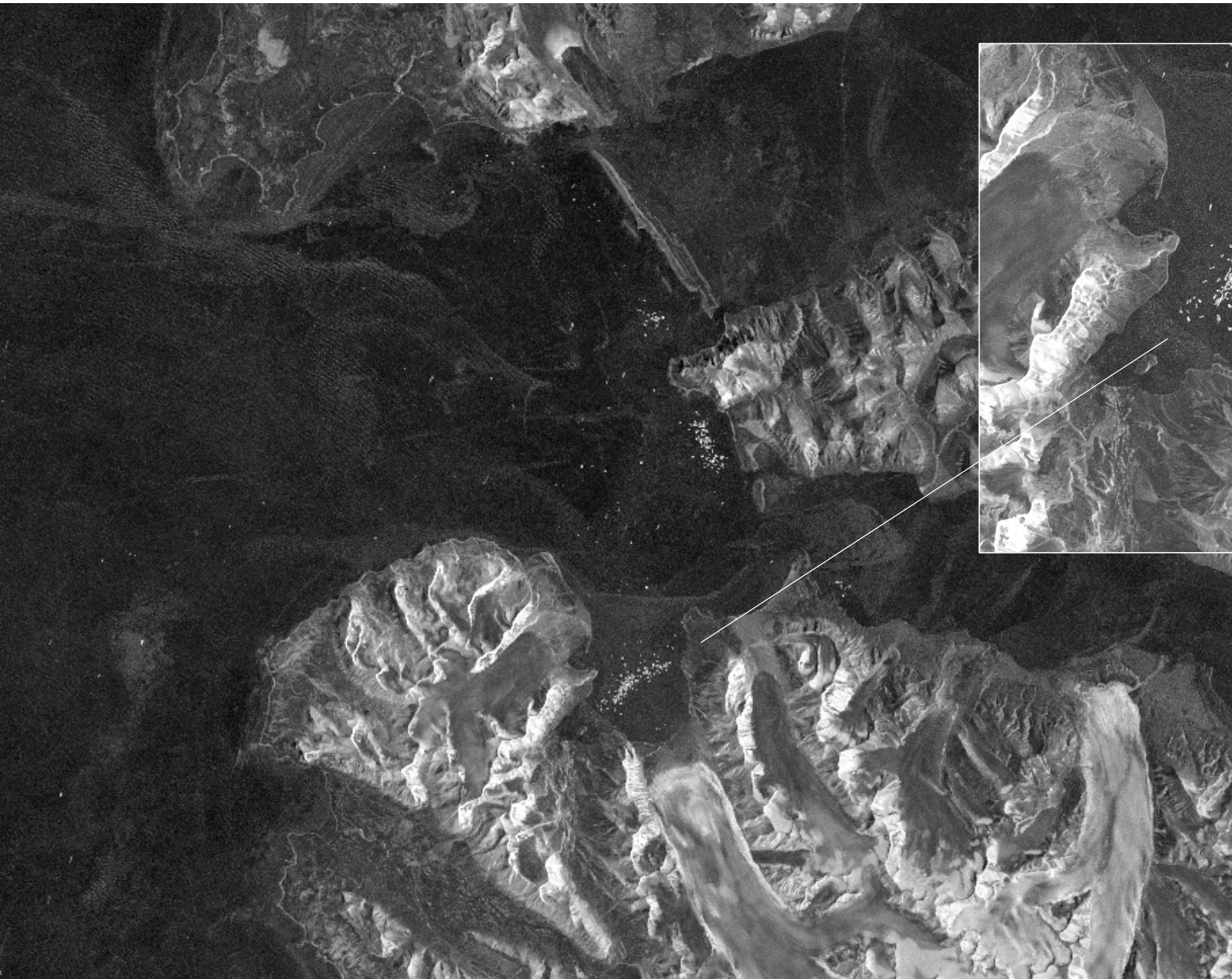
UiO • Department of Geosciences  
University of Oslo

# Langsom bevegelse



NGI  
KSAT  
inio





UiO : Department of Geosciences  
University of Oslo



Satellitter forteller oss om:

- Globale forandringer
- Lokale konsekvenser

*Tenk globalt*

*Handle lokalt*

